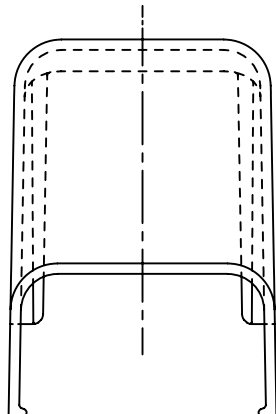
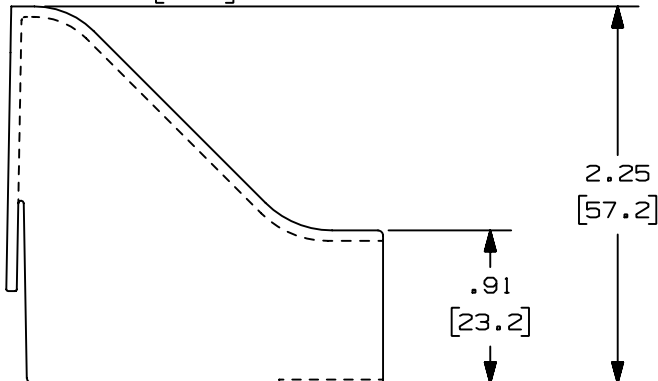
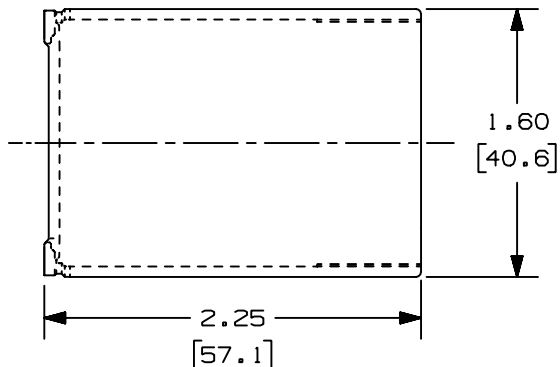
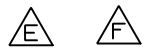


THIS COPY IS PROVIDED ON A RESTRICTED BASIS AND IS NOT TO BE USED IN ANY WAY DETRIMENTAL TO THE INTERESTS OF PANDUIT CORP.



PART NAME	PANDUIT P/N *	COLOR	WEIGHT
DROP CEILING FITTING	DCF10WH-X	WHITE	2.65 LB/100 PCS. (1203g/100 PCS.)
	DCF10EI-X	ELECTRICAL IVORY	
	DCF10IG-X	INTERNATIONAL GRAY	
	DCF10IW-X	INTERNATIONAL WHITE	



NOTES:
 *1. SEE CURRENT PRICE SHEET FOR PART NUMBER SUFFIX DESIGNATION FOR PACKAGE SIZE.



CAD FILENAME/LAYERS D34017BA_DC_DCF10_02.PRT

-	-----	--	--	F. ADDED PART NUMBERS DCF10IG-X AND DCF10IW-X	-----	--	--		
4	03-17-04	JHEP	RMHI	E. REMOVED PART NUMBERS DCF10BG, DCF10BR, DCF10LG AND DCF10LI	34017-2		RGRO		
-	-----	--	--	D. ADDED FILENAME.	-----	--	--		
3	07-08-02	JHNU	RMHI	C. REVISED MATERIAL IN DRAWING TITLE BLOCK.	34017-2		RGRO		
2	11-25-87	LDB	WJB	B. ADDED PART NUMBERS DCF10EI AND DCF10LI.	34017-2	2	WJB		
1	10-01-86	RN	WJB	A. DCF10 PART NUMBER WAS DCF.	34017-2	1	WJB		
R	06-11-86	RN	WJB	RELEASED TO PRODUCTION	34017-2	R	WJB		
REV	DATE	BY	CHK	DESCRIPTION	ECN	-	R	CUST	SUP

PANDUIT CORP. TINLEY PARK, ILLINOIS	
DROP CEILING FITTING (DCF10) CUSTOMER DRAWING	
UNLESS OTHERWISE SPECIFIED, DIMENSIONAL TOLERANCES ARE: (.X) ± (.XXX) ± (.XX) ±.03 [.8] ANGLES ±	UNLESS OTHERWISE SPECIFIED, ALL DIMENSIONS ARE GIVEN IN INCHES, THIRD ANGLE PROJECTION.
DRAWN BY: RN	MAT'L: ABS
DATE: 06-04-86	SCALE: FULL
CHK'D: WJB	DRAWING NO. 34017-02
	DWG SIZE: A