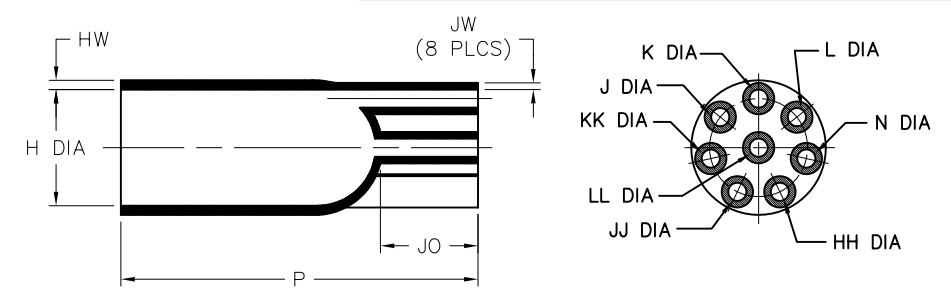
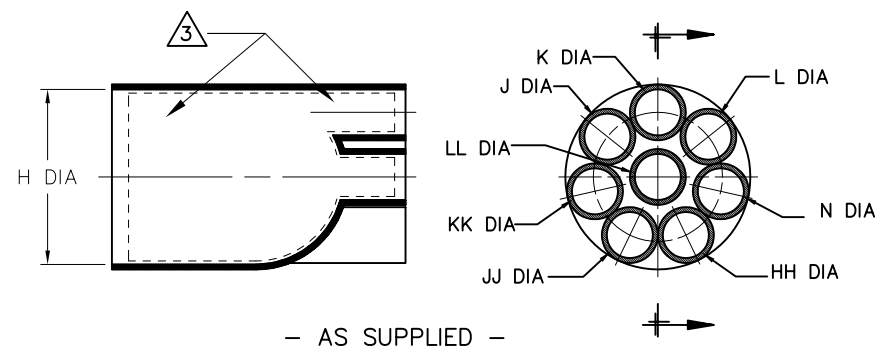


| REVISIONS | | |
|-----------|---------------------------|------------|
| LTR | DESCRIPTION | DATE |
| F | REVISED PER ECO-10-001668 | 01/26/2010 |



- AS SUPPLIED -

- AFTER UNRESTRICTED RECOVERY -

NOTES

- ALL DIMENSIONS ARE IN $\frac{\text{INCHES}}{[\text{MILLIMETERS}]}$; $\frac{\text{lbs}}{[\text{gms}]}$
- DIMENSIONS APPEARING IN TABLE ARE AS FOLLOWS:
 - a - AS SUPPLIED
 - b - AFTER UNRESTRICTED RECOVERY

3. COATING (ADHESIVE): IS OPTIONAL AS SUPPLIED DIMENSIONS APPEARING IN TABLE ARE FOR UNCOATED PARTS. WHEN COATING IS ADDED, ENTRY DIAMETER WILL BE REDUCED BY .06 [1.5] MAX.

4. ORDERING INFORMATION

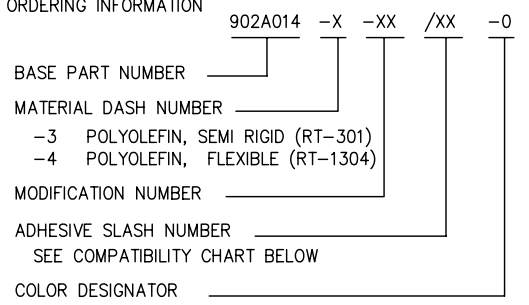


TABLE OF DIMENSIONS

| PART NUMBER | H | | J,K,L,N,HH,JJ,KK & LL | | P | JO | HW | JW | WEIGHT | THIS BOOT SHALL FIT MIL-DTL-26482 SHELL SIZE |
|-------------|-----------------------|-----------------------|-----------------------|---------------------|------------------------|-----------------------|-----------------------|-----------------------|-----------------------|--|
| | MIN | MAX | MIN | MAX | $\pm 10\%$ | $\pm 10\%$ | $\pm 20\%$ | $\pm 20\%$ | REF | |
| 902A014 | $\frac{1.27}{[32,2]}$ | $\frac{1.09}{[27,7]}$ | $\frac{.37}{[9,4]}$ | $\frac{.18}{[4,6]}$ | $\frac{4.00}{[102,8]}$ | $\frac{1.40}{[35,6]}$ | $\frac{0.30}{[7,62]}$ | $\frac{0.10}{[2,54]}$ | $\frac{.036}{[16,3]}$ | 20 |

If this document is printed it becomes uncontrolled. Check for the latest revision

CUSTOMER DRAWING

| COMPATIBILITY CHART | | |
|---------------------|---------------------------------|-----------------------------|
| MATERIAL DASH NO. | ADHESIVE (COATING) SLASH NUMBER | ADHESIVE (COATING) S NUMBER |
| -3 | /42; /86; /87 | S-1017; S-1048; S-1052 |
| -4 | /42; /86; /87 | S-1017; S-1048; S-1052 |

UNLESS OTHERWISE SPECIFIED DIMENSIONS ARE INCHES. METRIC DIMENSIONS ARE IN BRACKETS.
 DECIMAL TOLERANCES
 .XXX \pm 0.005 [0.13 mm]
 .XX \pm 0.01 [0.25 mm]
 .X \pm 0.1 [0.50 mm]
 ANGLE TOLERANCE
 .X \pm 1 DEG.

DRAWN: UNGUYEN
 APPROVED: DHURRELL
 THIRD ANGLE PROJECTION

Tyco Electronics
 Raychem Molded Parts
 305 Constitution Dr
 Menlo Park, CA 94025

TITLE
 BOOT, STRAIGHT, EIGHT ENTRY

SIZE: B
 CODE IDENT. NO.: 06090
 DWG. NO.: 902A014

© 2008-2010 Tyco Electronics Corporation. All rights reserved. DO NOT SCALE THIS DRAWING SHEET 1 OF 1