

PanZone® Overhead Distribution Racks

PANDUIT®

SPECIFICATION SHEET

specifications

The overhead distribution rack shall provide additional two, four, or six rack units above a rack or cabinet to maximize real estate utilization in data centers or telecommunication rooms. The universal mounting brackets shall allow maximum flexibility to mount to most industry ladders or cable trays. The overhead distribution rack shall also have the capability to be suspended by threaded rod from the ceiling. The rack shall have the ability to mount in numerous configurations to better transition between the overhead pathway and network racks or cabinets below. The rack shall have provisions for cable management for improved cable routing and manageability. The overhead distribution rack shall include installation and rack unit identification markings to reduce installation time allowing for quicker network deployments.



technical information

Dimensions:	PZLRB2U: 8.75"H x 20.26"W x 3.26"D (222.3mm x 514.6mm x 82.8mm) PZLRB4U: 12.25"H x 20.26"W x 3.26"D (311.2mm x 514.6mm x 82.8mm) PZLRB6U: 15.75"H x 20.26"W x 3.26"D (400.1mm x 514.6mm x 82.8mm)
Load rating:	40/60/80 lbs.
Packaging:	Package includes overhead distribution rack, (2) square mounting brackets, (2) L-shaped mounting brackets and hardware

key features and benefits

Two, four, or six additional racks units	Provides higher port density per square foot in data centers or telecommunication rooms to maximize real estate utilization
Universal mounting brackets	Can mount to most industry ladder racks or cable trays; can also be suspended by threaded rod
Multiple mounting configurations	Allows five different mounting configurations to ladder rack/cable tray (side/below, side above, below/parallel, below/perpendicular, above/perpendicular)
Robust steel design	Accommodates 40/60/80 pound load rating
Cable management provisions	Improves cable routing and manageability making it easier to perform moves, adds, or changes
Installation identification	Can easily assemble, mount, and secure overhead distribution rack reducing installation time
Rack unit identification	Can easily locate and mount network products, reducing installation time

applications

The PanZone® Overhead Distribution Rack is designed to add useable rack units above a rack/cabinet to maximize real estate utilization. The universal mounting brackets improve network design flexibility by being able to mount to most industry ladder racks and cable trays. In addition, the overhead rack can be suspended by threaded rod from the ceiling.

The PanZone® Overhead Distribution Rack enables the deployment of zone distribution areas within the data center for greater scalability and quicker server deployments. This is accomplished by pre-cabling to the overhead rack in the initial build out and simply installing patch cords to connect to newly deployed servers.

www.panduit.com

PanZone® Overhead Distribution Racks

2 RU:	PZLRB2U
4 RU:	PZLRB4U
6 RU:	PZLRB6U

Overhead Distribution Rack Cable Management Solutions

Zero rack space cable manager 3": PZBR3

Zero rack space cable manager 4": PZBR4

Vertical D-ring: CMVDR2

Strain Relief Bars

Extended strain relief bar: SRB19BLY

Straight strain relief bar (10 pack): SRBS19BL-XY

Mini-Com® Angled Modular Patch Panels

24-port, 1 RU:	CPPA24FMWBLY
48-port, 2 RU:	CPPA48FMWBLY
72-port, 2 RU:	CPPLA72WBLY

Mini-Com® Flat Modular Patch Panels

24-port, 1 RU:	CPP24FMWBLY
48-port, 1 RU:	CPP48HDWBLY
48-port, 2 RU:	CPP48FMWBLY
72-port, 2 RU:	CPP72FMWBLY

For additional modular patch panels reference www.panduit.com

PanZone® Overhead Distribution Racks

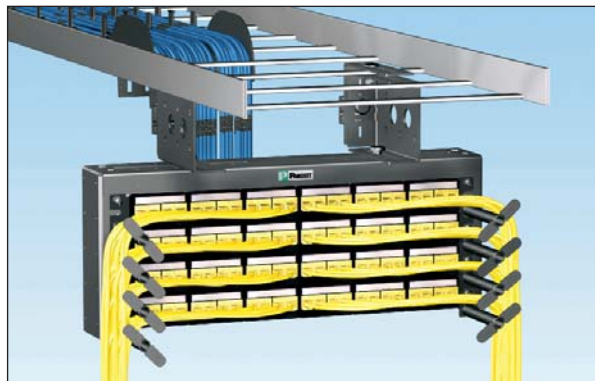
Illustrated below are examples of the overhead distribution rack's mounting flexibility. See product installation instructions for full list of mounting configurations.

Ladder Rack Mounting Applications

Shown with zero rack unit cable manager, PZBR4



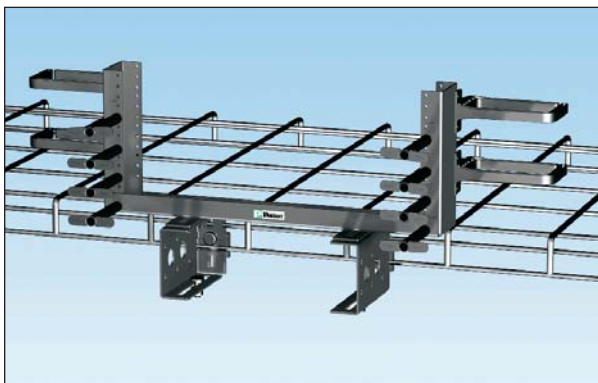
Mounted to side rail below ladder rack



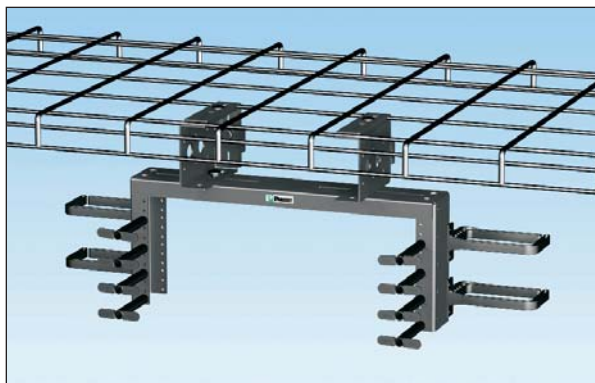
Mounted to center rung below and perpendicular to ladder rack

Wyr-Grid® Overhead Cable Tray Mounting Applications

Shown with zero rack unit cable manager, PZBR4 and vertical D-ring, CMVDR2



Mounted to side and above Wyr-Grid® Cable Tray



Mounted below and parallel with Wyr-Grid® Cable Tray

WORLDWIDE SUBSIDIARIES AND SALES OFFICES

PANDUIT CANADA
Markham, Ontario
cs-cdn@panduit.com
Phone: 800.777.3300

PANDUIT EUROPE LTD.
London, UK
cs-emea@panduit.com
Phone: 44.20.8601.7200

PANDUIT SINGAPORE PTE. LTD.
Republic of Singapore
cs-ap@panduit.com
Phone: 65.6305.7575

PANDUIT JAPAN
Tokyo, Japan
cs-japan@panduit.com
Phone: 81.3.6863.6000

PANDUIT LATIN AMERICA
Guadalajara, Mexico
cs-la@panduit.com
Phone: 52.33.3777.6000

PANDUIT AUSTRALIA PTY. LTD.
Victoria, Australia
cs-aus@panduit.com
Phone: 61.3.9794.9020

For a copy of Panduit product warranties, log on to www.panduit.com/warranty

For more information

Visit us at www.panduit.com

Contact Customer Service by email: cs@panduit.com
or by phone: 800.777.3300 and reference RKSP109

PANDUIT®

©2012 Panduit Corp.
ALL RIGHTS RESERVED.
RKSP109--WW-ENG
Replaces WW-RKSP68
11/2012